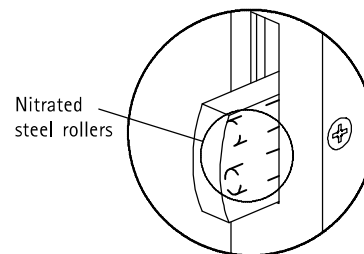




10 Door locks series 8000

General information

- The dead bolt is pivoting, rather than sliding. It is therefore longer than conventional bolts, so there is the same proportion of the dead bolt within the lock case as is engaged into the frame, making it extremely difficult for burglars to force entry.
- Locking and unlocking by a single turn of 360° with the cylinder key.
- The latch bolt can be operated by the doorhandle as well as by the key.
- Two holes above and below the handle opening allow the door handles to be screwed to each other through the lock, so there are no screws visible from the outside. In addition to a more pleasing look and increased security a much stronger fastening of the door handles is obtained.
- The lock can be used left hand and right hand simply by turning the latch bolt.
- The lock is manufactured from non-corroding materials.
- All locks can also be supplied in a P-type version, which means that the dead bolt is equipped with two invisible nitrated steel rollers, making it impossible to cut the bolt with a hacksaw. Recommended for double action doors and doors without rebate.
- P-type locks have the same dimensions as the standard locks.
- Finish:
 - lock case, faceplate: zinc alloy, natural colour coated
 - latch bolt : zinc alloy nickel plated
 - night bolt : zinc alloy zinc plated

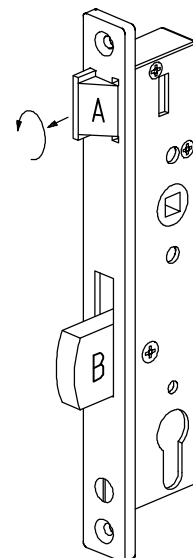


P-type

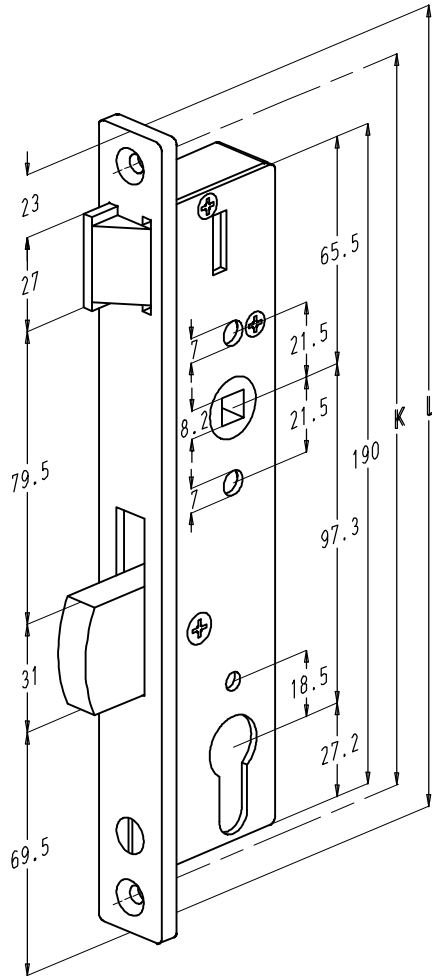
Turning of the latch bolt

Procedure:

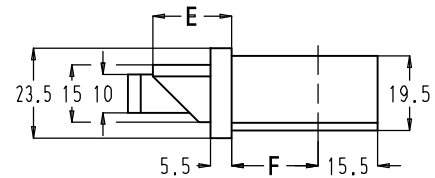
1. Put the dead bolt (B) in closed position.
2. Pull the latch bolt (A) forwards with a pair of pliers.
3. Turn the latch bolt (A) 180°.
4. Move the latch bolt (A) backwards.



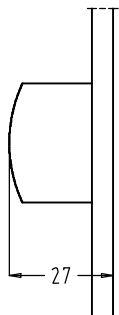
Lock with latch bolt and dead bolt



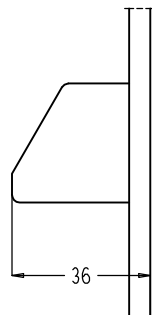
Order code standard type	Type bolt	E mm	F mm	K mm	L mm	Order code P-type
8001-25	A	15	22.5	210	230	8001P-25
8002-25	B					8002P-25
8005-25	A	19	22.5	210	230	8005P-25
8006-25	B					8006P-25
8008-25	B	24	22.5	210	230	8008P-25
8001-30	A	15				27.5
8002-30	B		27.5	8002P-30		
8005-30	A	19	27.5	210	230	8005P-30
8006-30	B					8006P-30
8001-35	A	15	32.5	222	238	8001P-35
8002-35	B		32.5	222	238	8002P-35



- Dead bolts:



type A



type B